

	<b>PROGETTISTA</b>  <b>Tecnologia Ricerca Rischi</b>	<b>COMMESSA</b> NQ/R22178	<b>UNITA'</b> -
	<b>LOCALITA'</b> RAVENNA (EMILIA ROMAGNA)	<b>DIS-MEC-D-13025</b>	
	<b>PROGETTO / IMPIANTO</b> FSRU Ravenna e Collegamento alla Rete Nazionale Gasdotti		<b>Rev.</b> 0

Rif. TRR: 72341

**EMERGENZA GAS**  
**INCREMENTO DI CAPACITÀ DI RIGASSIFICAZIONE (DL 17.05.2022, n. 50)**  
**FSRU Ravenna e Collegamento alla Rete Nazionale Gasdotti**

**Rapporto Preliminare di Sicurezza**  
**per la fase di Nulla Osta di Fattibilità (NOF)**  
**ai sensi del D.Lgs. 105/15**

**ALLEGATO D.9.3-C**  
**Planimetria dei Presidi di Emergenza, delle Vie di Fuga e dei Punti di Raccolta FSRU**

0	Emissione per permessi	A. Visigoti	A. Romano	G. Romano	06/07/2022
<b>Rev.</b>	<b>Descrizione</b>	<b>Elaborato</b>	<b>Verificato</b>	<b>Approvato</b>	<b>Data</b>

---

## 8.11 Life Saving Equipment System

### Illustration

- 8.11a Life Saving Equipment Symbol
- 8.11b Life Saving Equipment - Engine Room Floor Plan
- 8.11c Life Saving Equipment - Engine Room 4th Deck
- 8.11d Life Saving Equipment - Engine Room 3rd Deck
- 8.11e Life Saving Equipment - Engine Room 2nd Deck
- 8.11f Life Saving Equipment - Accommodation Upper Deck
- 8.11g Life Saving Equipment – Upper Deck
- 8.11h Life Saving Equipment – A Deck
- 8.11i Life Saving Equipment – B Deck
- 8.11j Life Saving Equipment – C Deck
- 8.11k Life Saving Equipment – D Deck
- 8.11l Life Saving Equipment – Navigation Bridge Deck
- 8.11m Life Saving Equipment – Bosun Store

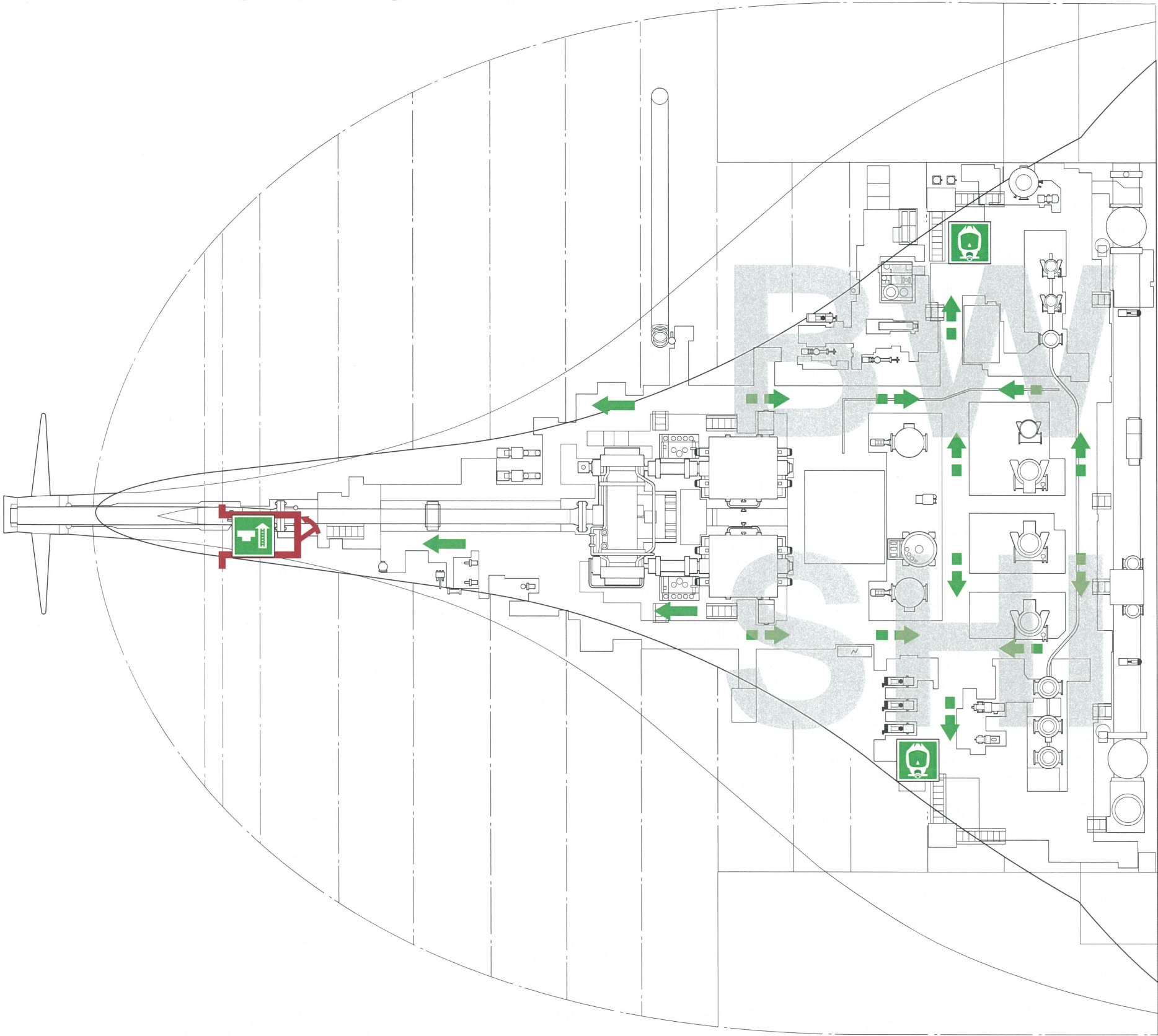
8.11 LIFE SAVING EQUIPMENT SYSTEM

Illustration 8.11a Life Saving Equipment Symbols

Key	
	Primary Escape Route
	Secondary Escape Route
	Emergency Escape Breathing Device
	Rescue Boat (6P) with Davit at STBD' Side
	Lifeboat (48P) with Davit
	Inflatable Life Raft for 25 Person (4), 10 Person(1)
	Davit-Launched Life Raft for 25 Person(4), 10 Person (1)
	Life Buoy
	Life Buoy with Buoyant Lifelines of at Least 30m.
	Life Buoy with Self-Igniting Light
	Life Buoy with Self-Igniting Light & Buoyant Lifelines of at Least 30m.
	Life Buoy with Self Igniting Light & Self-Activating Smoke Signal
	Life Jacket
	Children Life Jacket
	Immersion Suit
	Muster Station
	Muster & Emergency instruction
	Two-way VHF Radiotelephone Apparatus
	Search and Rescue Transponder (SART)
	Emergency Position Indicating Radio Beacon (E.P.I.R.B)
	Line Throwing Appliance
	Rocket Parachute Flare (12 sets)
	Embarkation Ladder
	Stretcher
	Survival-Craft Distress Signal
	Medical Locker
	Personal Protection
	Solas Training Manual
	Emergency Exit
	A-Class Hinged Self-Closing Fire Door
	A-Class Hinged Fire Door
	A-Class Division
	Air Compressor for Breathing Apparatus



Illustration 8.11b Life Saving Equipment - Engine Room Floor Plan



Key

- Primary Escape Route
- Secondary Escape Route
- Emergency Exit
- Emergency Escape Breathing Device
- A-Class Hinged Self-Closing Fire Door
- A-Class Division



Illustration 8.11c Life Saving Equipment - Engine Room 4th Deck

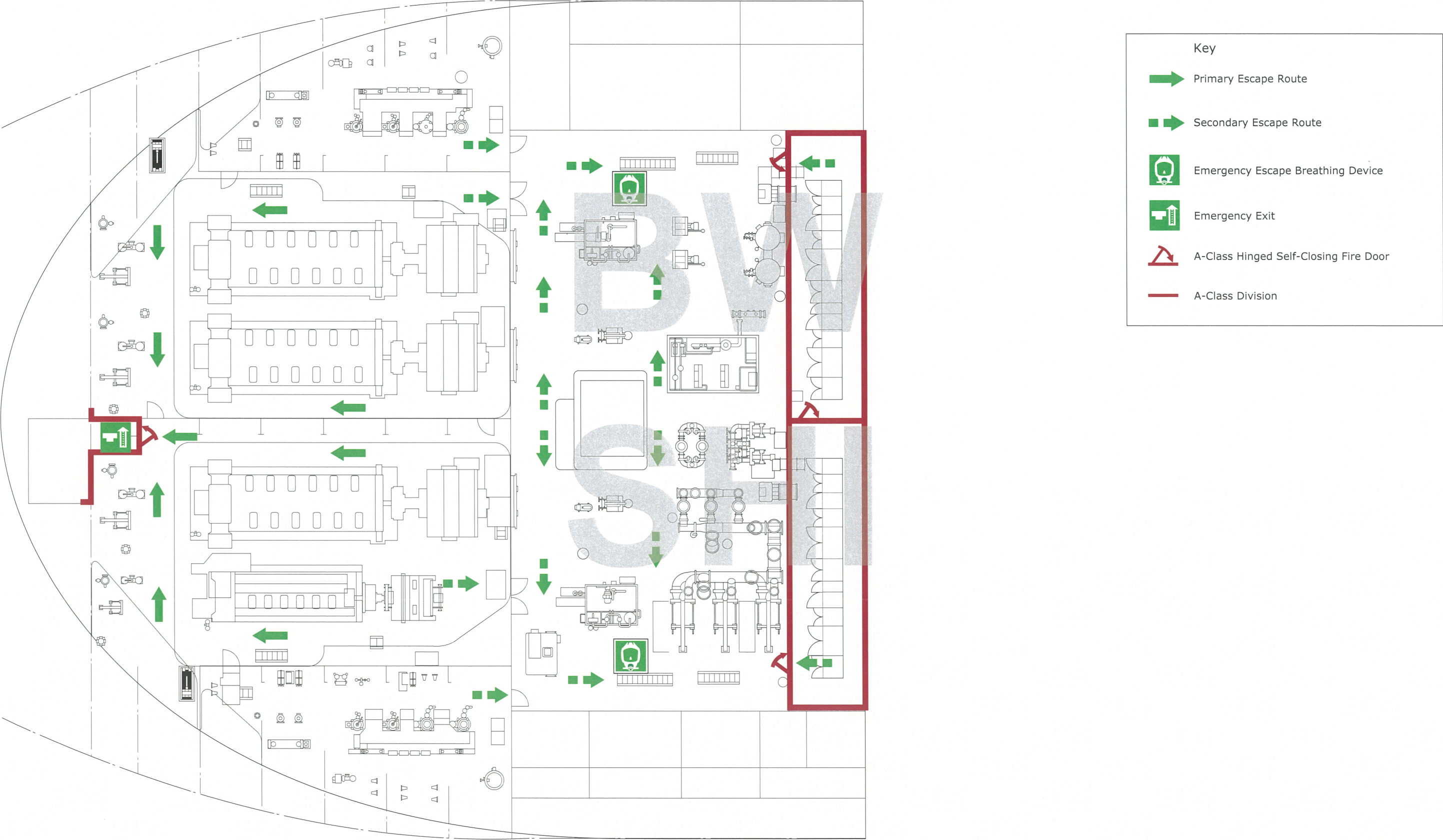




Illustration 8.11d Life Saving Equipment - Engine Room 3rd Deck

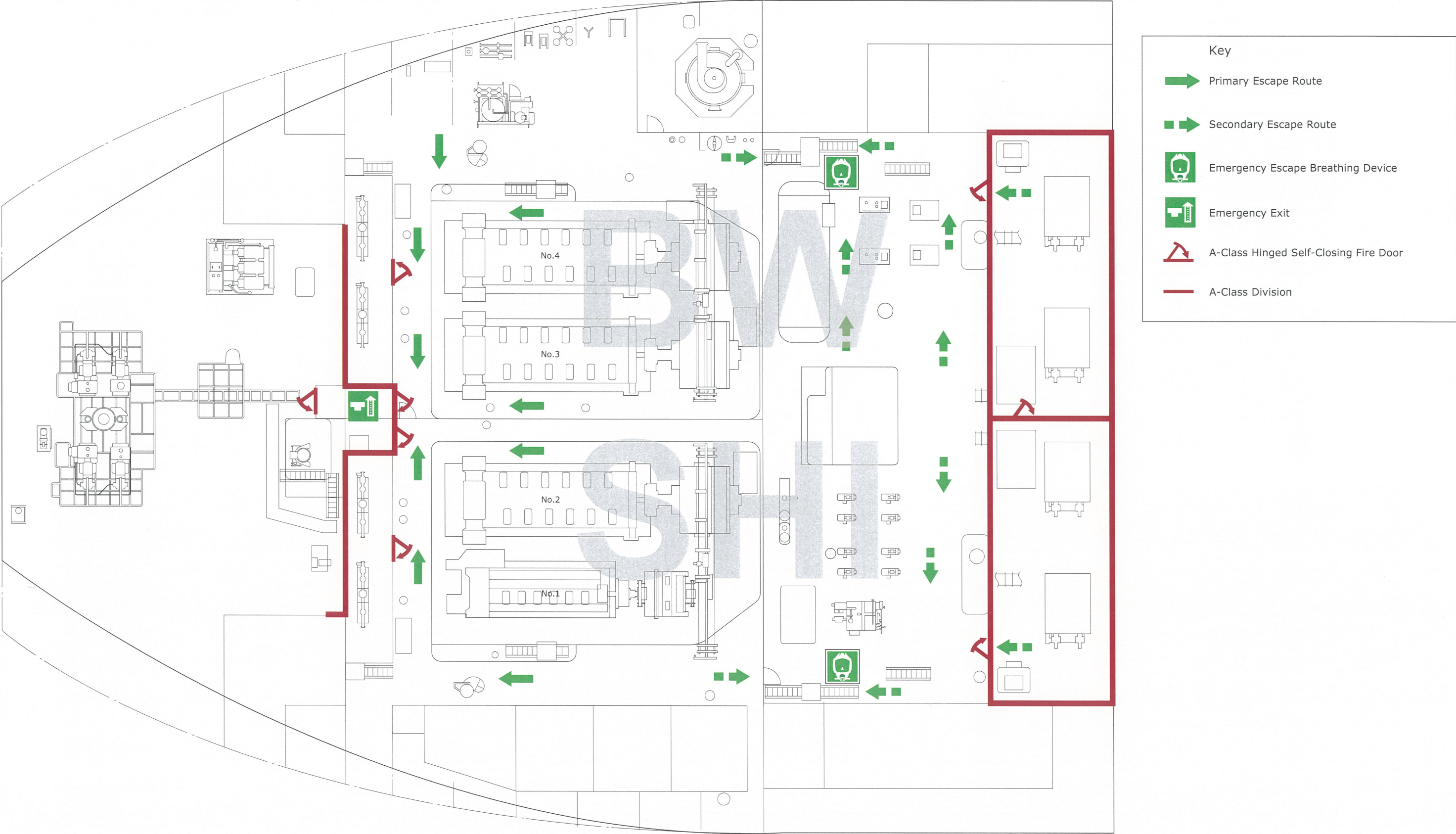




Illustration 8.11e Life Saving Equipment - Engine Room 2nd Deck



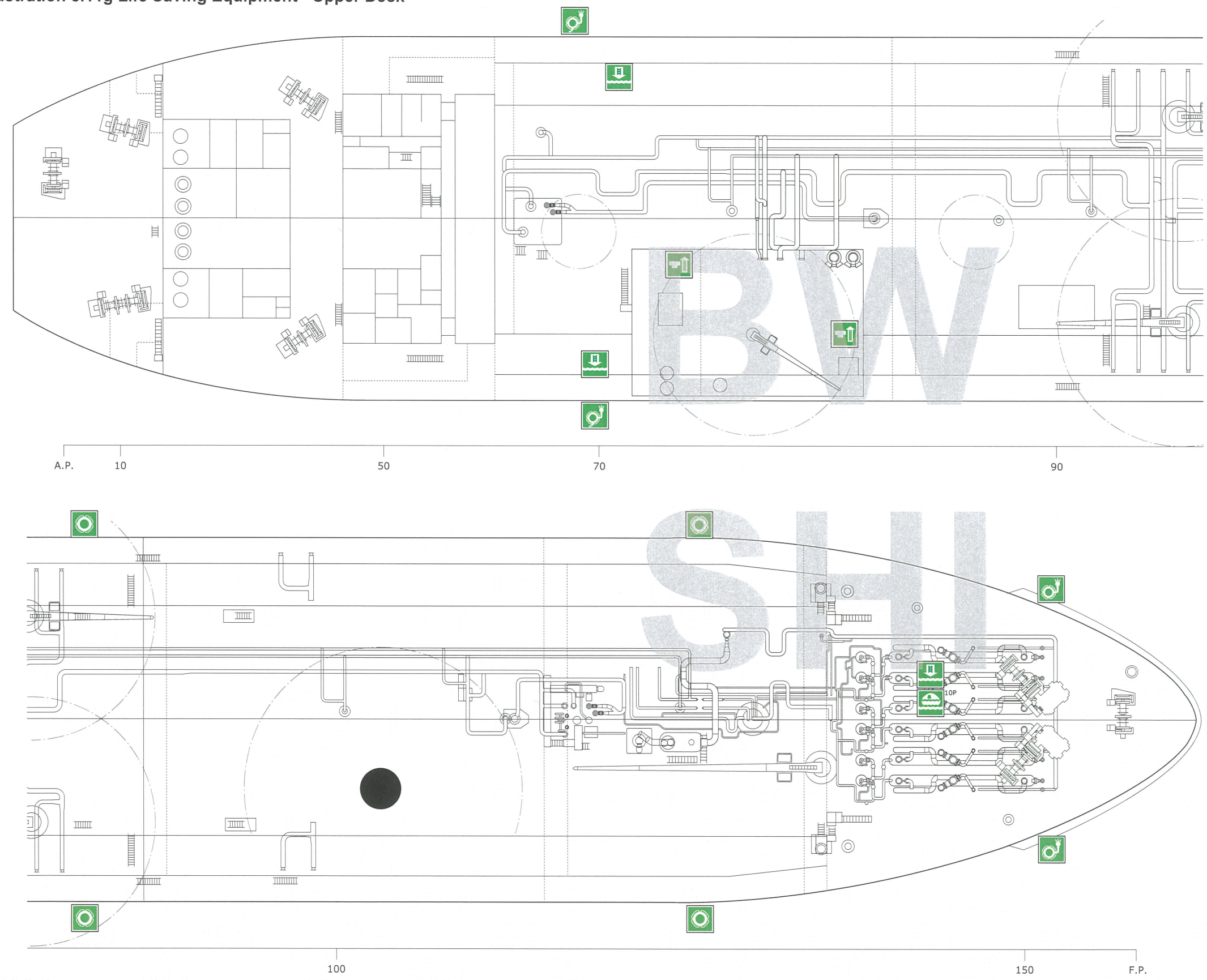


Illustration 8.11f Life Saving Equipment - Accommodation Upper Deck





Illustration 8.11g Life Saving Equipment - Upper Deck



Key

Inflatable Life Raft  
for 25 Person (4), 10 Person(1)

Davit-Launched Life Raft  
for 25 Person(4), 10 Person (1)

Life Buoy

Life Buoy with Buoyant Lifelines of at Least 30m.

Life Buoy with Self-Igniting Light

Life Buoy with Self-Igniting Light  
& Buoyant Lifelines of at Least 30m.

Emergency Exit



Illustration 8.11h Life Saving Equipment - A Deck





Illustration 8.11i Life Saving Equipment - B Deck



Illustration 8.11j Life Saving Equipment - C Deck

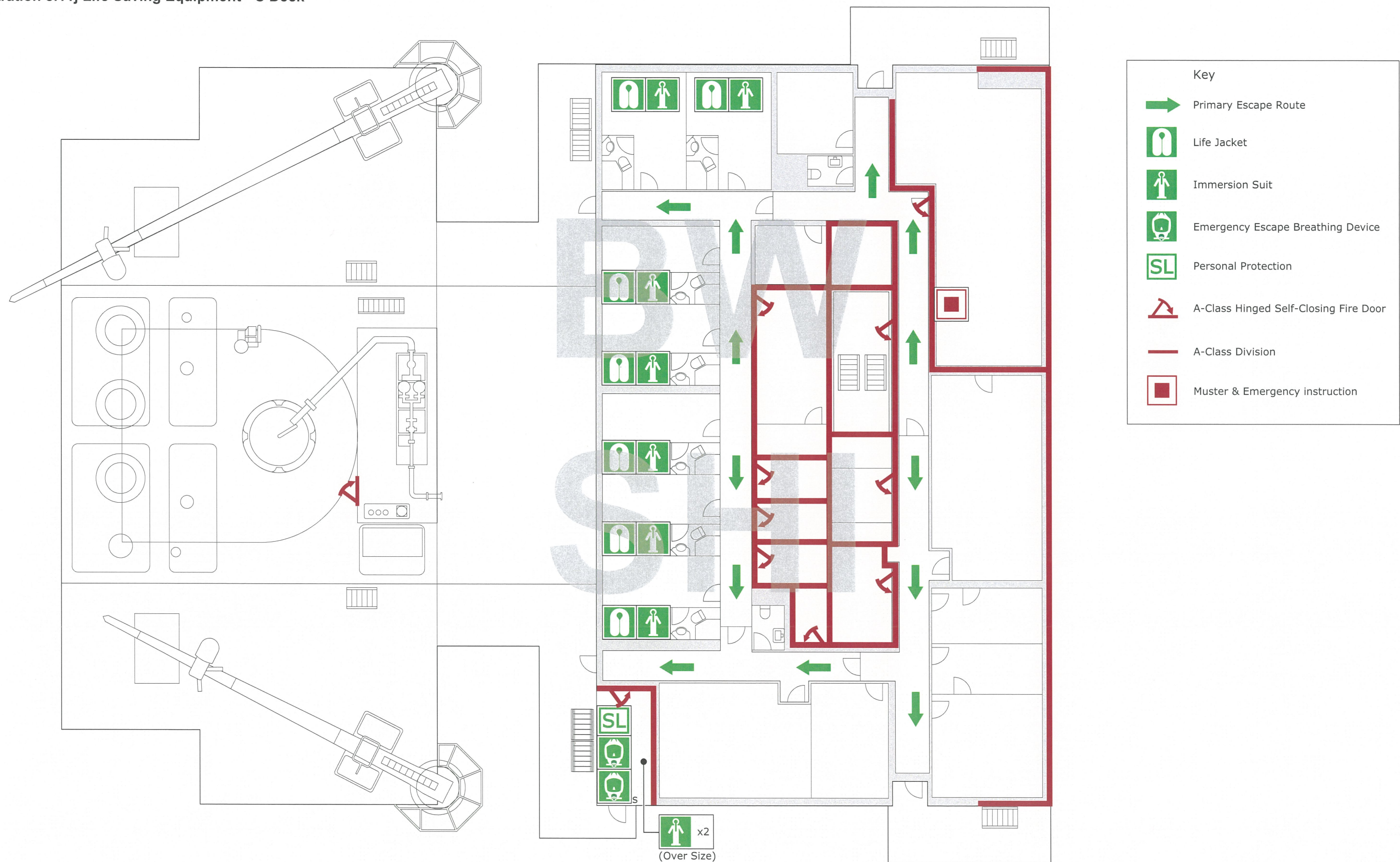
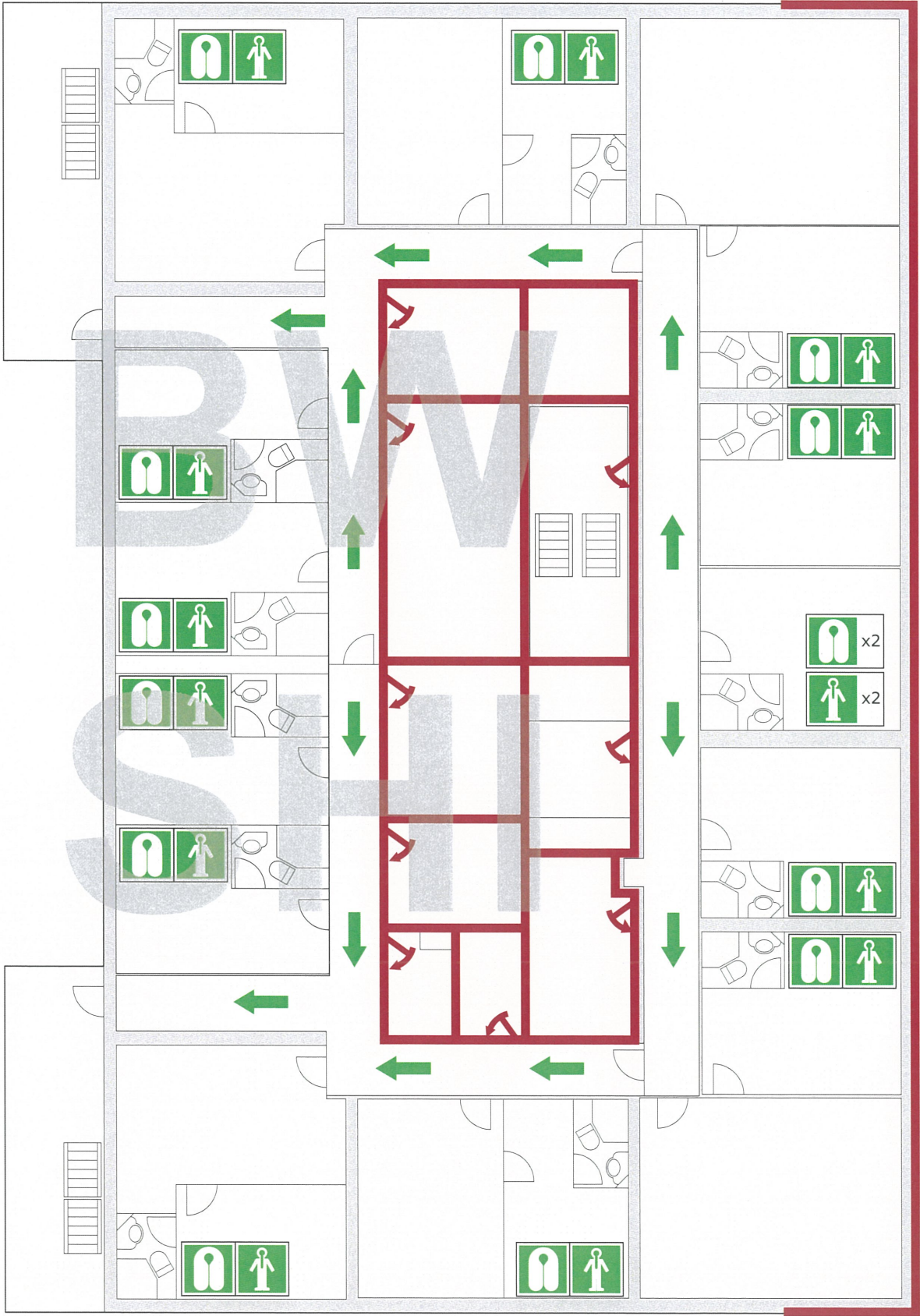
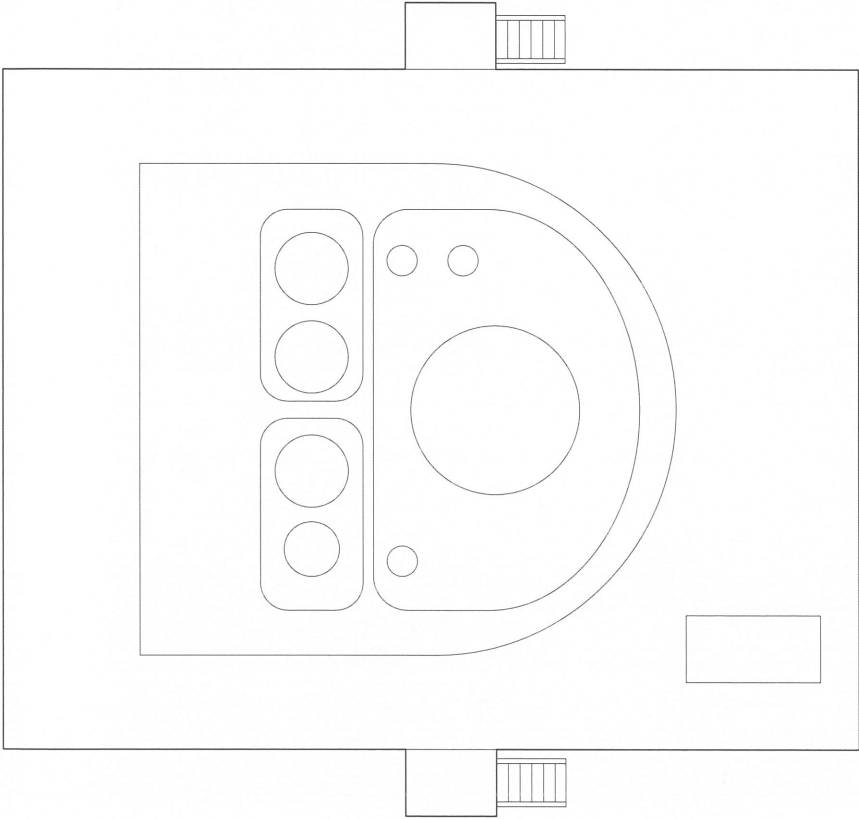




Illustration 8.11k Life Saving Equipment - D Deck



Key

- Primary Escape Route
- Life Jacket
- Immersion Suit
- A-Class Hinged Self-Closing Fire Door
- A-Class Division



Illustration 8.11I Life Saving Equipment - Navigation Bridge Deck



